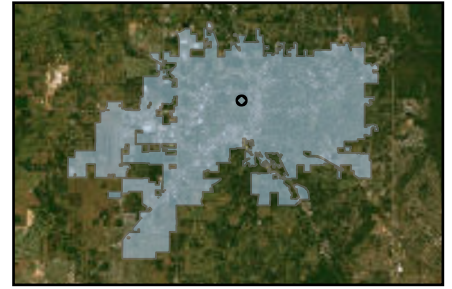


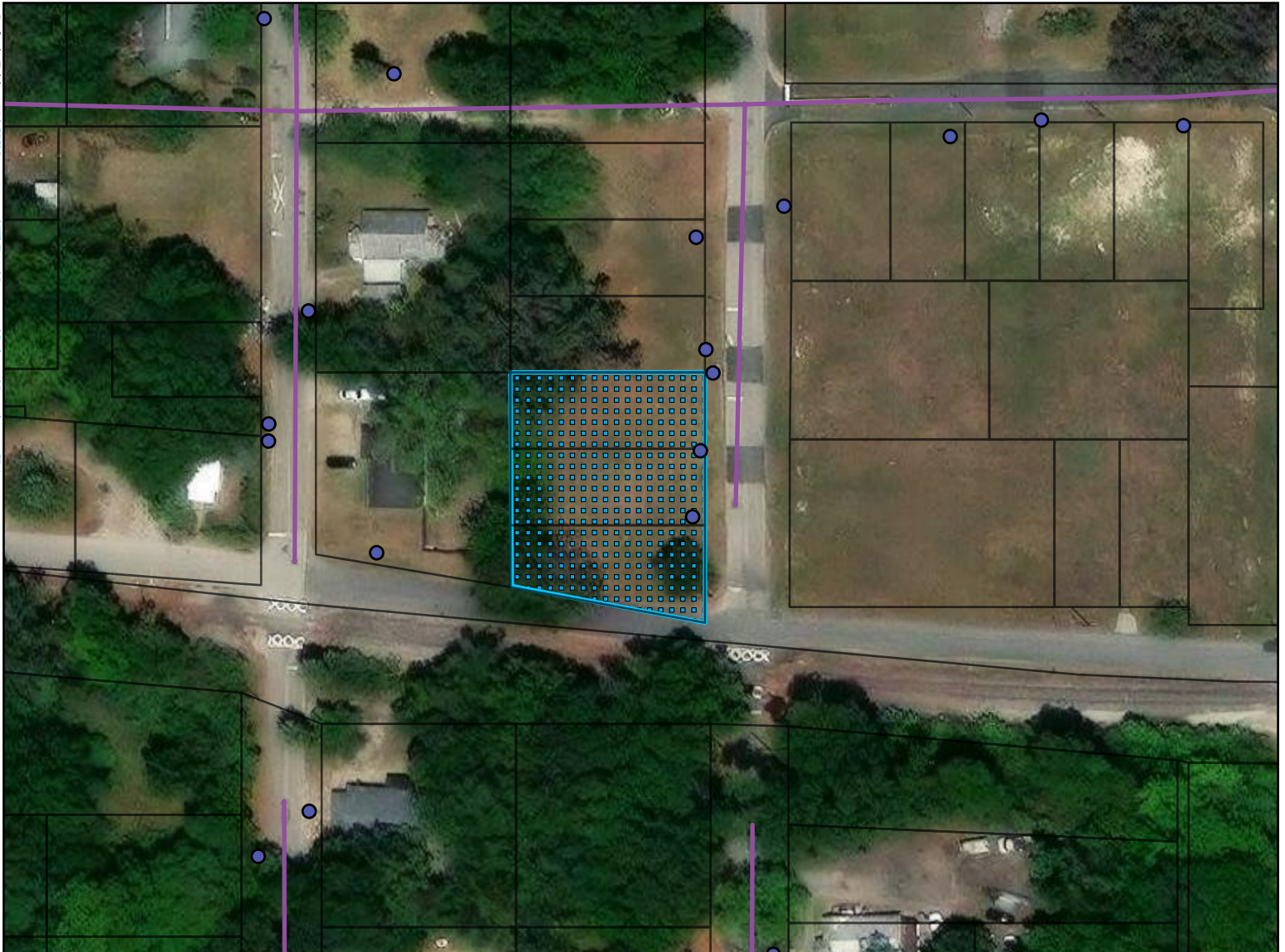
MAP

Property Size: Approximately 0.29 Acres
Land Use Designation: Neighborhood
Zoning: R-2, Two-Family Residential
Description:
Purpose:



The purpose of the maps is to show potential developers the size, location, zoning and available utilities.

Default Folder: M:\GIS\Department\IT\Exam\Requests\Roberto\Developer_CRA



- Water Service Connection
- ▭ Parcels
- Gravity Main

